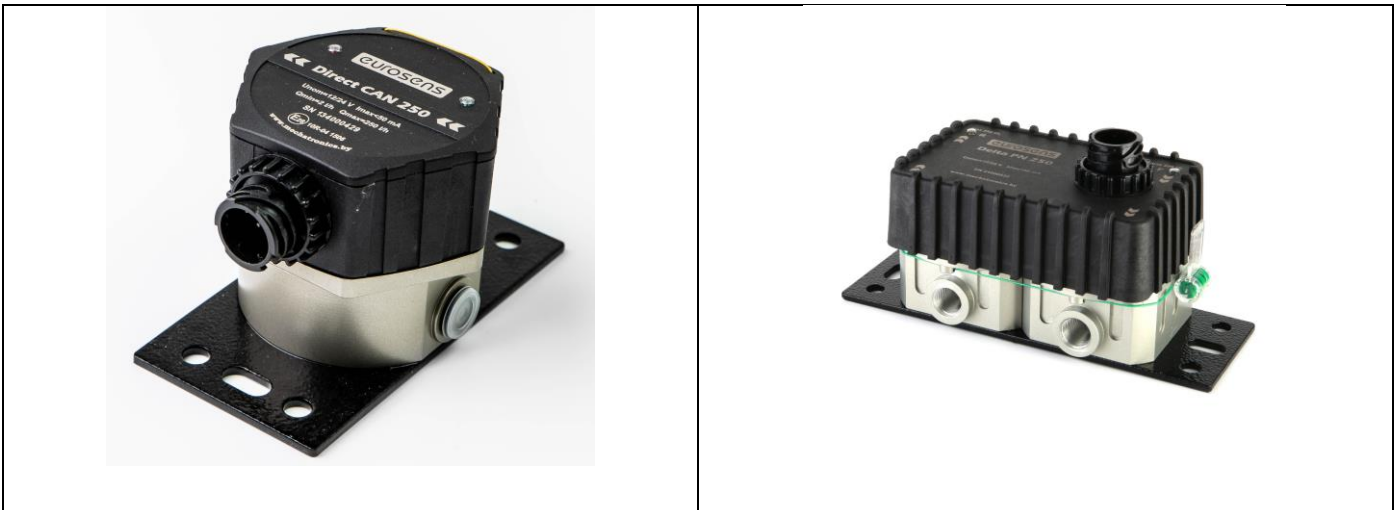


The advantages of fuel consumption meters

eurosens Direct, Delta

General concept: All Eurosens Direct and Eurosens Delta fuel consumption meters are designed with the idea of measuring diesel consumption as accurately as possible and prevent tampering.



1. Manufacturing technology and material of the measuring chamber.

The measuring chambers of Eurosens meters are manufactured by milling from a single piece of high-strength aluminium alloy D16T, with antifriction coating. This technology allows to exclude internal defects of the chamber and ensure its long operation life (2 years warranty without fuel volume limitation).

2. Built-in microcontroller.

All Eurosens meters have a powerful built-in 32-bit microcontroller that provides the functions described below, from digital interfaces to anti-magnetic protection.

3. Modern interfaces

Universal MODBUS or CAN interfaces of Eurosens meters allow to obtain, besides the total fuel consumption, also a number of other important parameters - operation time, operation modes, fuel temperature, tampering alarm, etc.

4. Sensing element

Hall sensors (3 per measuring chamber) are used as sensing elements. Their application allows to ensure resistance to the external magnetic field (unlike traditional reed switches), as well as the possibility of determining the direction of fuel flow.

5. Full protection against tampering with the meter by external magnetic field.

Erosens meters not only detect the application of an external magnetic field, but also continue to measure fuel consumption under any external influence. This is ensured by continuous measurement of the strength and orientation of external magnetic fields.

6. Thermocompensation

Taking into account the temperature difference between "Supply" and "Return" is a unique feature of Eurosens Delta fuel meters, which provides accurate fuel metering in any engine operation modes. Without thermocompensation in low fuel consumption modes (idle), the measurement error can be comparable to the engine fuel consumption.

7. Connector design .

The connector in Eurosens meters is built directly into the body of the meter, which is desirable for automotive sensors and removes the problem of damaging the cable lead.

8. Easy maintenance.

Erosens fuel meters can be disassembled and cleaned by local specialists without having to send the meter to a service centre.

9. Accessories.

A wide range of accessories is available for Eurosens fuel meters: installation kits, deaerator, Eurosens cable system with tees and cables of any length, intrinsic safety barrier, Eurosens displays.